



# Welcome

---

Public Information Meeting  
January 2015

---

[www.octa.net/I5IrvineTustinProject](http://www.octa.net/I5IrvineTustinProject)  
Helpline: (714) 560-5556





# Station #1

---

Overview and Purpose

---

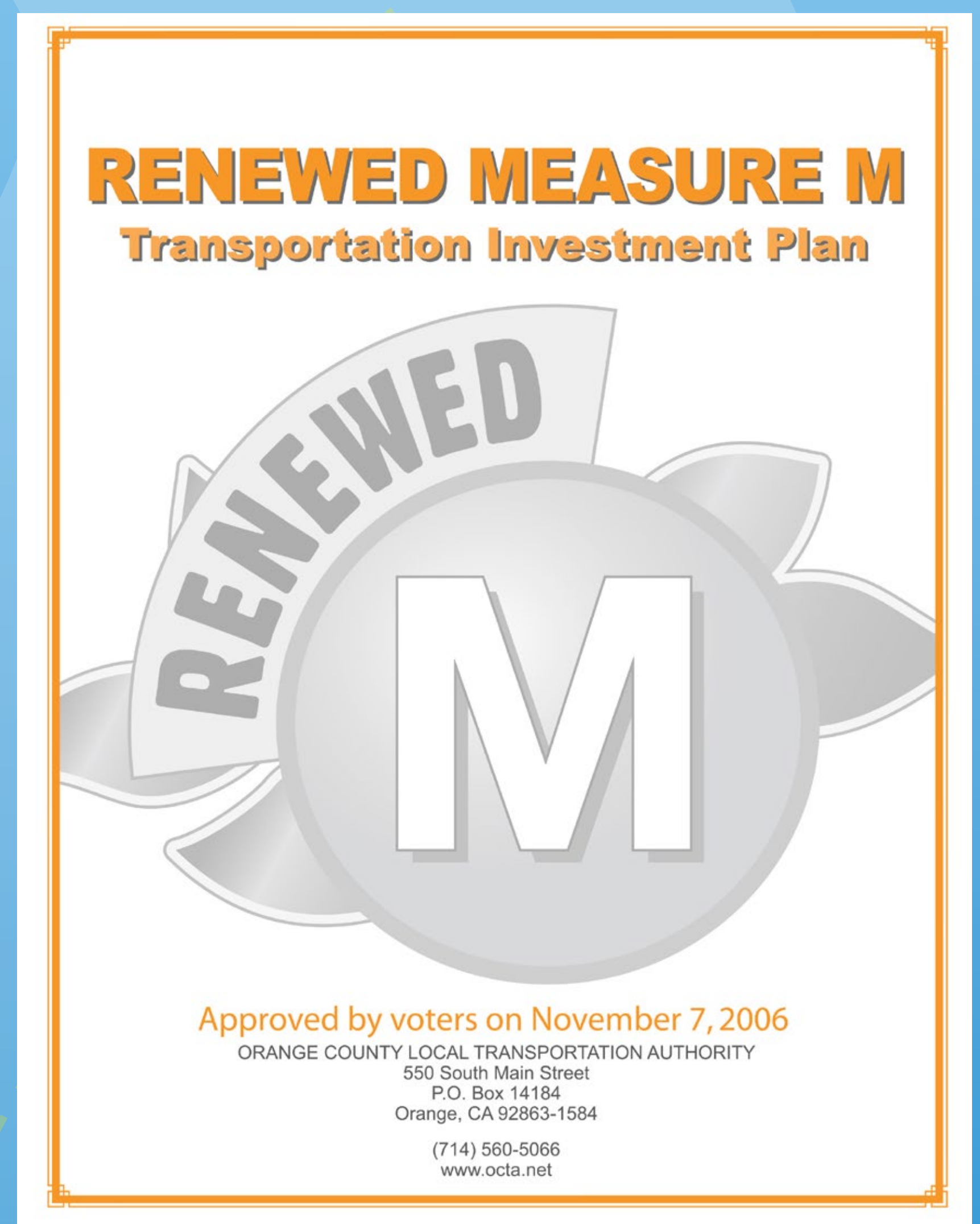






# Overview

- Project limits are from north of I-405 to SR-55
- Studying alternatives & potential environmental effects
- More than 350,000 daily trips
- Nearly ½ million daily trips by 2040
- I-5 essential to OC's mobility, economy & quality of life
- Renewed Measure M, which included this I-5 Project, was approved by nearly 70% of O.C. voters in 2006
- Funding source will need to be identified for design and construction should a build alternative be selected







# Project Need & Purpose

Currently, the I-5 corridor within the project limits is experiencing congestion and long traffic delays due to demand exceeding capacity.

The purpose of the project is to address existing and future traffic demand and congestion, and enhance freeway operations within the project limits as follows:

1. Increase the mainline capacity within the project limits with one additional lane in each direction
2. Improve the capacity of the ramps within the project limits
3. Improve operational deficiencies of merge and diverge areas within the project limits
4. Improve the existing auxiliary lanes operations
5. Optimize access of the existing HOV lane

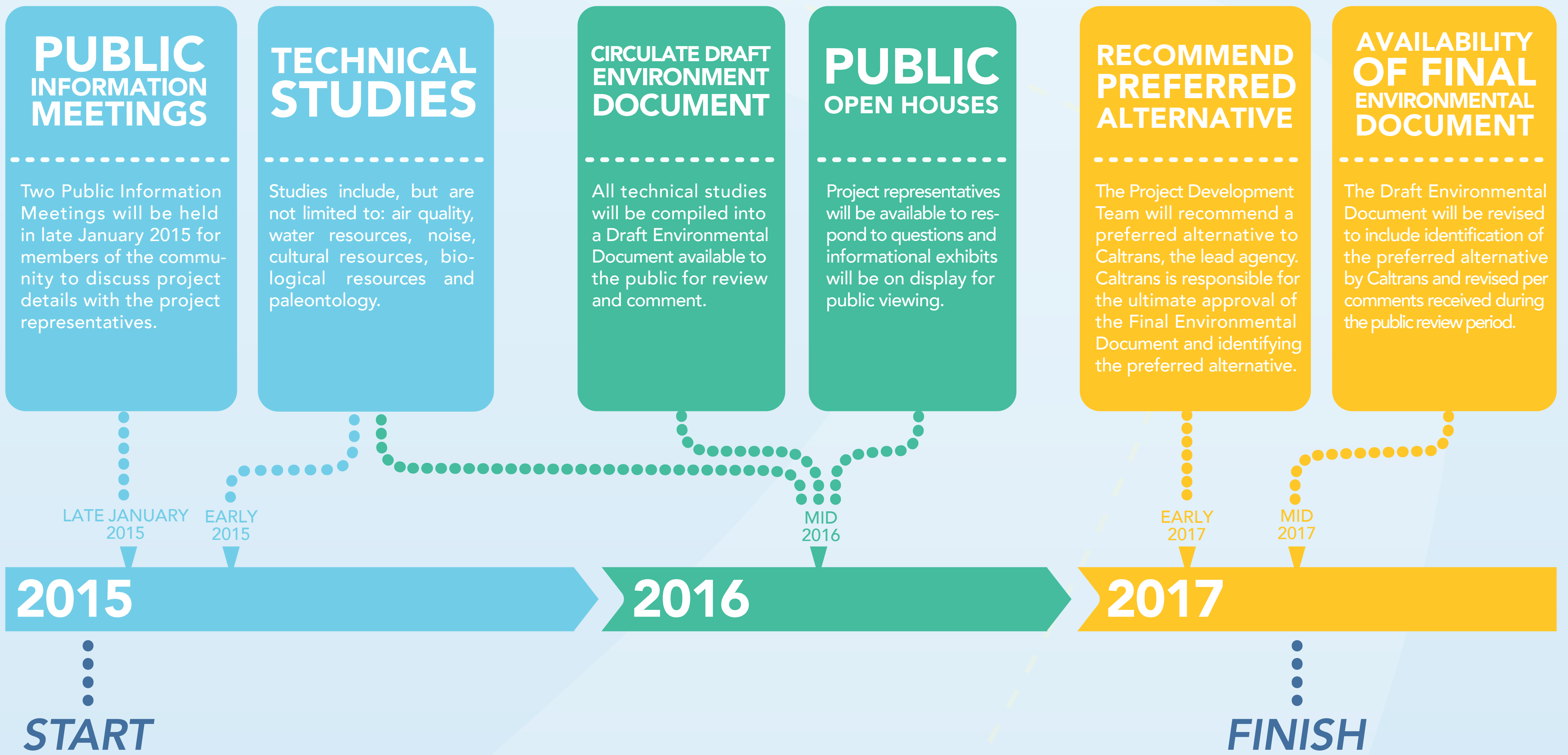
The goal of the proposed project is to also:

- Minimize environmental impacts as well as right-of-way acquisitions within the project limits





# Project Schedule







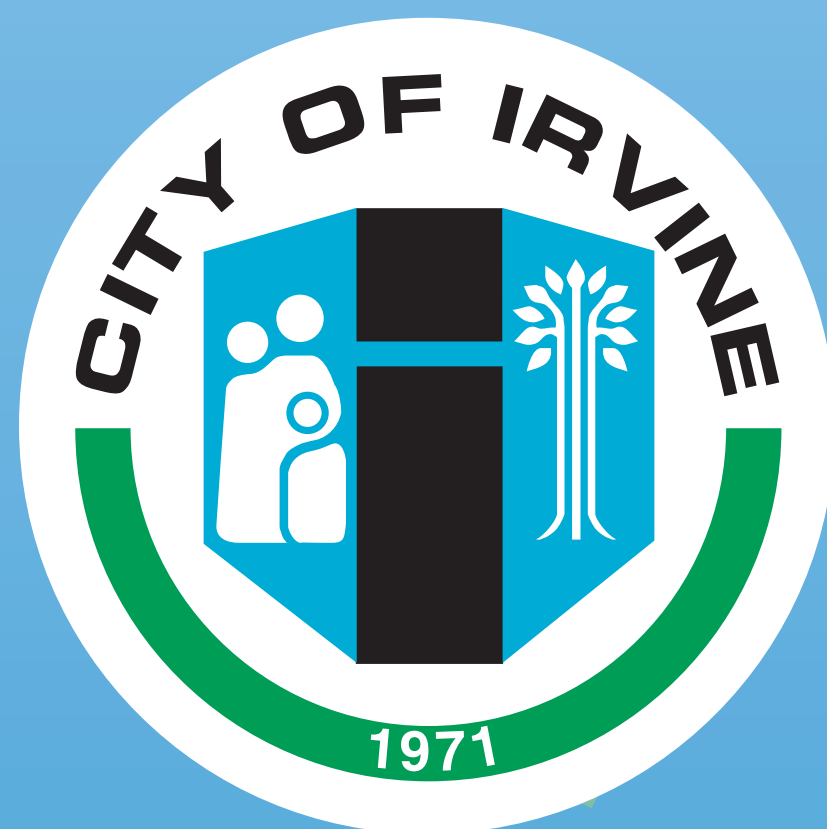
# Project Development Team



Funding Agency



Lead Agency: Facility Owner and Operator



Partner



Partner



# Station #2

---

## Project Area Map

---







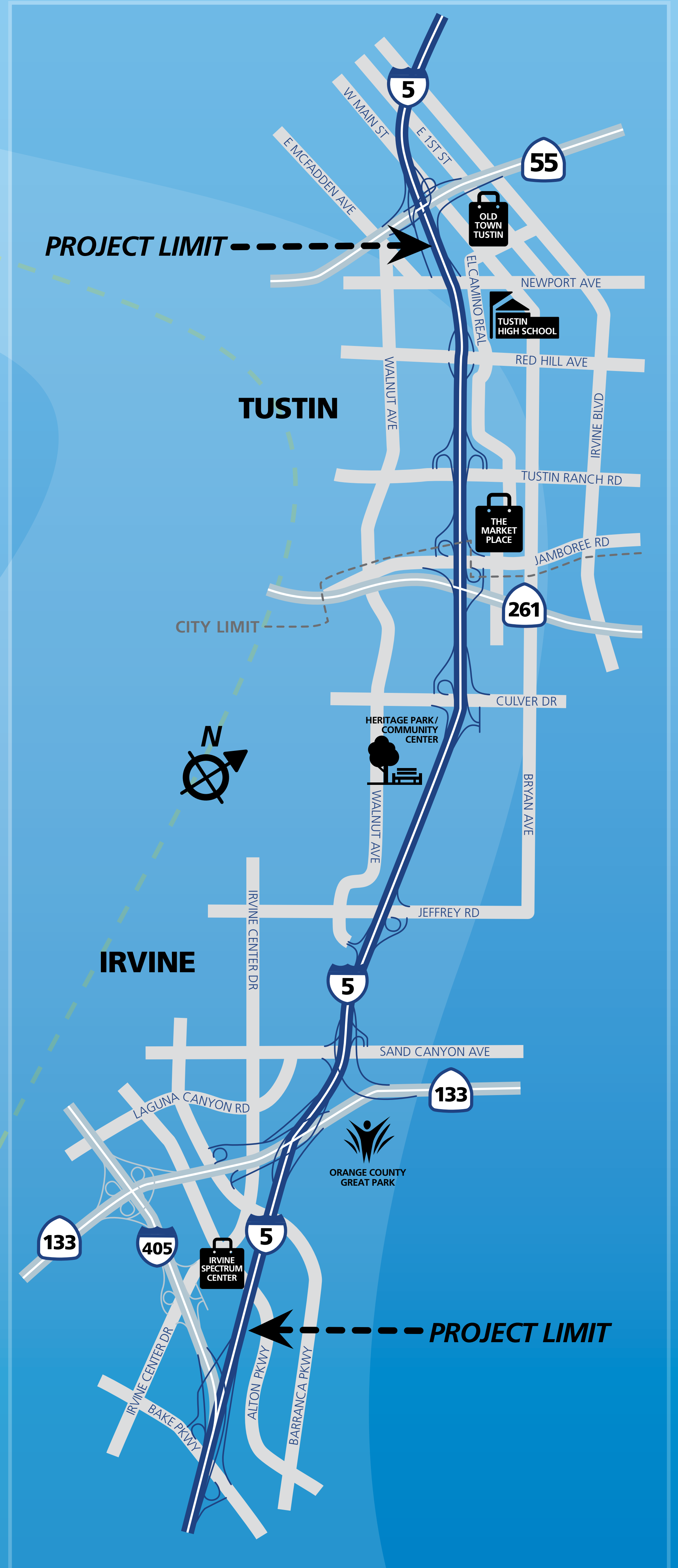
# Project Area Map

- Cities of Irvine & Tustin
- Residential, commercial & recreational land uses
- Major intersections (South to North)

Alton Pkwy.  
 Sand Canyon Ave.  
 Jeffrey Rd.  
 Culver Dr.  
 Jamboree Rd.  
 Tustin Ranch Rd.  
 Red Hill Ave.  
 Newport Ave.

- Nearby destinations (partial list)

Great Park  
 OCTA Irvine Base  
 Caltrans TMC  
 Beckman High School  
 The Marketplace  
 Tustin High School  
 Old Town Tustin  
 Kia Motors  
 The District  
 Irvine High School  
 Irvine Valley College  
 CSUF Satellite Campus  
 Webster University  
 Taco Bell HQ  
 Irvine Spectrum







# Station #3

---

Project Improvements  
Being Considered

---





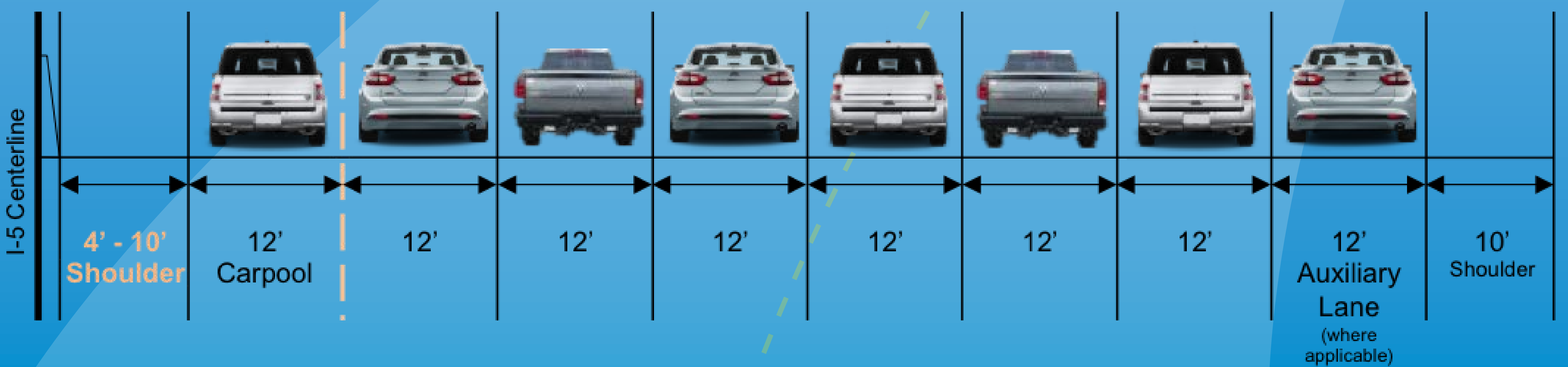


# Project Improvements

**No Build:** No capital or operational improvements



**Build:** Addition of one new, nine-mile general purpose lane both northbound and southbound. Includes new auxiliary lanes at four locations and converts the existing buffer-separated carpool lanes to continuous access carpool lanes.







# Newport Northbound On-ramp Option

\*Figure not to scale

\*\*Does not show actual design



Close existing  
Newport Ave. on-ramp

Relocate Newport Ave.  
on-ramp







# Sand Canyon Northbound Option

\*Figure not to scale


\*\*Does not show actual design



Cannot exit to NB Jeffrey Rd. off-ramp from SB SR-133/NB I-5 Connector or NB Sand Canyon Ave. on-ramp

NB Jeffrey Rd. off-ramp on a bridge over SB SR-133 to NB I-5 Connector

Joins NB Sand Canyon Ave. on-ramp with the SB SR-133/NB I-5 Connector

 NB Sand Canyon on-ramp and SB SR-133/NB I-5 Connector

 NB Jeffrey Rd. off-ramp







# Sand Canyon Southbound Option

\*Figure not to scale

\*\*Does not show actual design



Cannot exit to SB SR-133 from SB Sand Canyon Ave. on-ramp

SB I-5 to SB SR-133 on a bridge over SB Sand Canyon Ave. on-ramp



 SB Sand Canyon on-ramp

 SB I-5 to SB SR-133 Connector







# Station #4

---

## Environmental Review Process

---







# Study Process

## Environmental Process Key Steps

You are here.

Technical Studies & Preparation of Draft Initial Study/Environmental Assessment

Public Review of IS/EA

Response to Public Comments

Final Environmental Document







# Environmental Study



**Note:** Not all study topics are illustrated in the graphic featured above. Please feel free to ask staff to confirm other areas of study if this would be of interest to you.







# Station #5

---

Milestones &  
Next Steps

---







# Milestones

- Public Information Meetings
- Define/Develop Build Alternatives
- Conduct Technical Studies
- Circulation of Draft Environmental Document
- Public Hearing/Public Comment Period
- Response to Public Comment
- Caltrans Selects Preferred Alternative
- Revision of Environmental Document
- Final Environmental Document







# Station #6

---

Stay Connected

---







# OCTA Project Staff



## **Fernando Chavarria**

Manager of Outreach

714.560.5306

fchavarria@octa.net



## **Andrea Hammann**

Outreach

714.560.5573

ahammann@octa.net



## **Jeannie Lee**

Project Manager

714.560.5735

jlee@octa.net







# Stay Connected



call: (714) 560-5556



visit:  
[www.octa.net/I5IrvineTustinProject](http://www.octa.net/I5IrvineTustinProject)



tweet us: @I5IrvineTustin



[facebook.com/I5IrvineTustinProject](https://facebook.com/I5IrvineTustinProject)







# Station #7

---

Comments

---

